

Kiuru MReg Release 5

Product Fact Sheet

v1.4

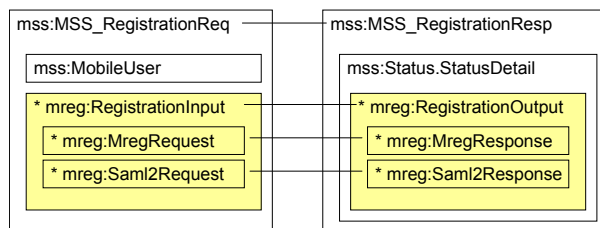
Product Description

Kiuru Release 4 introduced a technology support for registration operations in an MSSP environment. The Release 5 connects these operations also to REST protocol.

MSSP Registration (MReg) 1.0 is an XML schema extension designed to be used on top of ETSI TS 102 204 MSS_Registration messages. MReg contains all functions required to run a Registration Authority (RA) or manage customers. Additionally *MReg* includes operations like maintenance of Mobile User, Application Provider, SIM cards, and wireless operations for WPKI Client communication.

ETSI 102 204

MReg extends the ETSI TS 102 204 MSS_Registration messages by an MReg XML schema using standard message extension points. The ETSI standard provides these extensions points where these kind of added elements are allowed.



Certification Operations

MReg can access a Certificate Authority (CA) for the purpose of requesting or revoking Mobile User certificates. *MReg* can also produce proof-of-possession data, generate certificate serial numbers, create check sums etc.

Wireless Operations

Wireless operations are operations, which can communicate direct with a WPKI client. They can connect directly to OTA-server and use WPKI protocol as is. For example a Ping-operation can be used to verify if a mobile phone and the WPKI Client have network connection.

Provisioning Operations

Provisioning operations are used for your customer's service maintenance. You can access any account and read, create, update and delete data as in any service systems.

Roaming

MReg leverages the ETSI TS 102 207 roaming mesh (MSS network) to connect a registration process with remote resources. In the registration domain, a registration process generally needs access to the registering subjects' public keys and their identity details. Instead of directly accessing the remote resources, the registration process uses *MReg* messaging in the MSS network.

Product Features

XML Documents

Standard XML schemas are included for reference.

- ETSI MSS standard schemas
- MReg MSS extensions
- FiCom MSS extensions
- OASIS DSSv1.0 schema

MReg SOAP API

Provisioning operations

- Mobile User provisioning
- SIM Card provisioning
- Insertion of new data
- Modification of data
- Deletion of data
- Querying of data
- Searching for data
- Paging of result sets

Certification operations

- Certificate registration
- Certificate renewal, revocation
- Activation and code management
- Certificate SerialNumber management

Wireless support operations

- Proof-of-possession
- Key generation/discovery
- Client ping
- Client profile management

Advanced operations

- XKMS, SPML2, SAML2 schema support

About Methics

Methics Ltd is a privately held company, which has developed PKI and wireless PKI products for application providers and operators and built unique security and performance testing tools for operators. The company focuses on security applications and digitizing customer relationship, processes and customer interaction.

Kiuru is a registered trademark of Methics Ltd in Finland and other countries.